

Super Yacht pontoons 3800, 4300, 4800, 5300, 6300

The **Super Yacht pontoons** are the largest standard products in the Marinetek pontoon range and have been designed for the biggest boats and super yachts in modern marinas. The design of the units is based on Marinetek Breakwaters and are of extremely strong construction with reinforced joints and mooring points. The units can be provided with large top entry service channels on both sides or in the middle. Mooring can be by piles, chain or Seaflex.

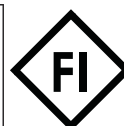
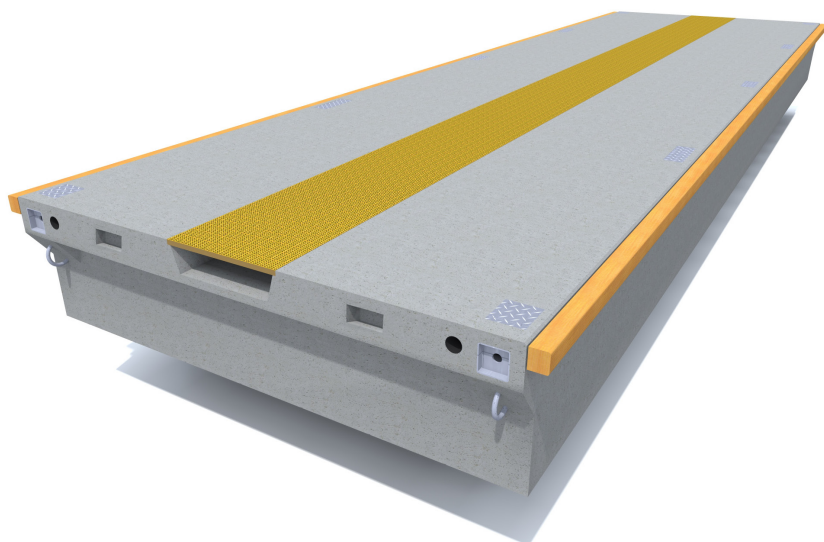
TECHNICAL DATA

Concrete strength: 45 N/mm² steel reinforced plastic fibre concrete.
Exposure class according to European EN 206-1 standard

Core: Expanded polystyrene, density 15 kg/m³

Reinforcement: Partly or fully hot dip galvanised or stainless steel

Optional accessories: Wooden deck, cable ducts, service channels (350x250 or 800x250 mm) and fenders (timber or wood plastic composite)



FLOATS	M3816SY	M3820SY	M4316SY	M4320SY	M4816SY	M4820SY	M5320SY	M6320SY
Length (m)	16,05	19,90	16,05	19,90	16,05	19,90	19,90*	19,90*
Concrete width (m)	3,5	3,5	4,0	4,0	4,5	4,5	5,0	6,0
Height (m)	1,2	1,2	1,2	1,2	1,2	1,2	1,2	1,2
Weight (t)	29,1	36,3	31,7	39,5	37,8	47,1	53,0	63,6
Net capacity (kN/m ²)	6,6	6,6	6,6	6,6	6,6	6,6	6,6	6,6
Freeboard (m)	0,66	0,66	0,66	0,66	0,66	0,66	0,66	0,66
Strength of joint (kN)	2x703	2x703	2x703	2x703	2x703	2x703	2x703	2x703
Joint gap (mm)	35	35	35	35	35	35	35	35

* also available with 16,05 m lengths

Exact unit weight and freeboard are subjects to detailed specification of the unit, equipment and mooring methods. Shown numbers are for standard and unloaded units.

Marinetek operates a policy of continuous development and reserves the right to change specifications without notice.

Modification date: 26.11.2014

MARINETEK GROUP OY

Vattuniemenkatu 3
FI-00210 Helsinki
www.marinetek.net

TEL. +358 (0)9 682 4100
FAX +358 (0)9 682 41030
EMAIL info@marinetek.net

MARINETEK