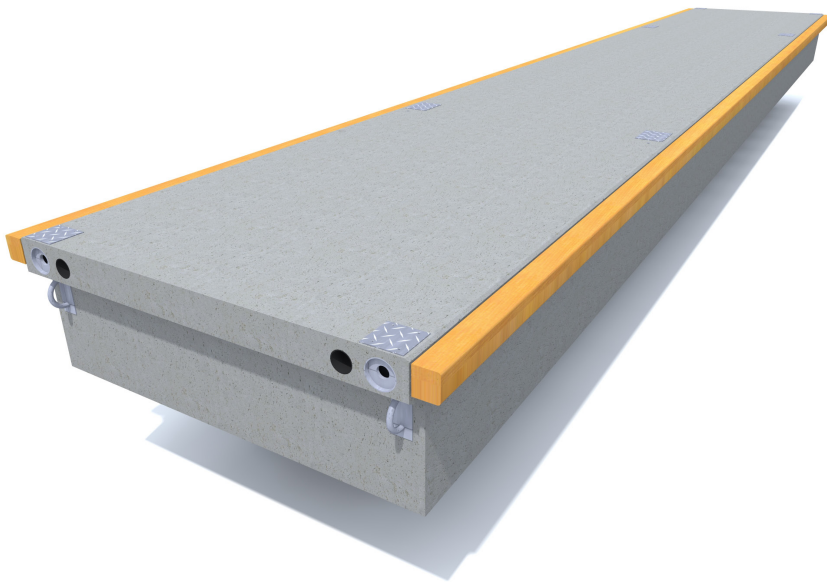


# Heavy Duty pontoons 2700, 3300, 4300

The **Heavy Duty Pontoons** have been designed for boat moorings in modern marinas, overpass bridges and landing stages. They are very strong and maintenance free with high loading capacity and long service life. The optional extras include e.g. cable ducts, fenders and fixing rails for fingers. It can be fitted up to 7,5 t bollards. The standard floats come in two widths and two lengths. The pontoon can be moored by piles or chain or Seaflex through the mooring wells.



## TECHNICAL DATA

Concrete strength: 45 N/mm<sup>2</sup> steel reinforced plastic fibre concrete.  
Exposure class according to European EN 206-1 standard

Core: Expanded polystyrene, density 15 kg/m<sup>3</sup>

Reinforcement: Partly or fully hot dip galvanised or stainless steel

Optional accessories: Wooden deck, fixing rails, cable ducts and fenders (timber or wood plastic composite)

FLOATS	M2712HD	M2715HD	M3312HD	M3315HD	M4312HD	M4315HD
Length (m)	11,92	14,92	11,92	14,92	11,92	14,92
Width with fenders (m)	2,7	2,7	3,3	3,3	4,3	4,3
Concrete width (m)	2,4	2,4	3,0	3,0	4,0	4,0
Height (m)	0,85	0,85	0,85	0,85	0,85	0,85
Weight (t)	10,7	13,4	12,2	15,3	16,4	20,6
Net capacity (kN/m <sup>2</sup> )	4,6	4,6	5,0	5,0	5,0	5,0
Freeboard (m)	0,46	0,46	0,50	0,50	0,50	0,50
Strength of joint (kN)	2x322	2x322	2x322	2x322	2x322	2x322
Joint gap (mm)	35	35	35	35	35	35

Exact unit weight and freeboard are subjects to detailed specification of the unit, equipment and mooring methods. Shown numbers are for standard and unloaded units.

Marinetek operates a policy of continuous development and reserves the right to change specifications without notice.

Modification date: 14.11.2014

## MARINETEK GROUP OY

Vattuniemenkatu 3  
FI-00210 Helsinki  
www.marinetek.net

TEL. +358 (0)9 682 4100  
FAX +358 (0)9 682 41030  
EMAIL info@marinetek.net



**MARINETEK**