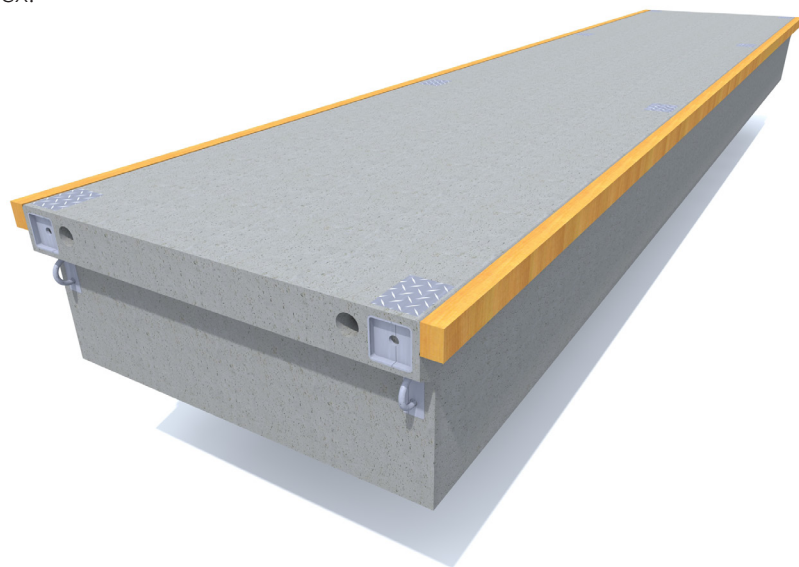


Premier pontoons 2700, 3300

Based on the world famous Marinetek breakwaters, the completely new **Premier Pontoon** range represents the latest technology in concrete pontoon construction. All units can be provided with integral top entry service channels. As with all Marinetek concrete systems these are of exceptionally strong construction with continuous floatation providing a high loading capacity with higher freeboard for large boat marinas. Premier pontoons can be moored by piles, chain or Seaflex.



TECHNICAL DATA

Concrete strength: 45 N/mm² steel reinforced plastic fibre concrete.
Exposure class according to European EN 206-1 standard

Core: Expanded polystyrene, density 15 kg/m³

Reinforcement: Partly or fully hot dip galvanised or stainless steel

Optional accessories: Wooden deck, fixing rails, cable ducts, service channels (240x120 mm) and fenders (timber or wood plastic composite)

FLOATS	M2712PE	M2716PE	M2720PE	M3312PE	M3316PE	M3320PE
Length (m)	12,20	16,05	19,90	12,20	16,05	19,90
Width with fenders (m)	2,7	2,7	2,7	3,3	3,3	3,3
Concrete width (m)	2,4	2,4	2,4	3,0	3,0	3,0
Weight (t)	12,5	16,5	20,6	15,6	20,7	25,7
Height (m)	1,0	1,0	1,0	1,0	1,0	1,0
Net capacity (kN/m ²)	5,6	5,6	5,6	5,6	5,6	5,6
Freeboard (m)	0,56	0,56	0,56	0,56	0,56	0,56
Strenght of joint (kN)	2x322	2x322	2x322	2x322	2x322	2x322
Joint gap (mm)	35	35	35	35	35	35

Exact unit weight and freeboard are subjects to detailed specification of the unit, equipment and mooring methods. Shown numbers are for standard and unloaded units.

Marinetek operates a policy of continuous development and reserves the right to change specifications without notice.

Modification date: 14.11.2014

MARINETEK GROUP OY

Vattuniemenkatu 3
FI-00210 Helsinki
www.marinetek.net

TEL. +358 (0)9 682 4100
FAX +358 (0)9 682 41030
EMAIL info@marinetek.net

MARINETEK

