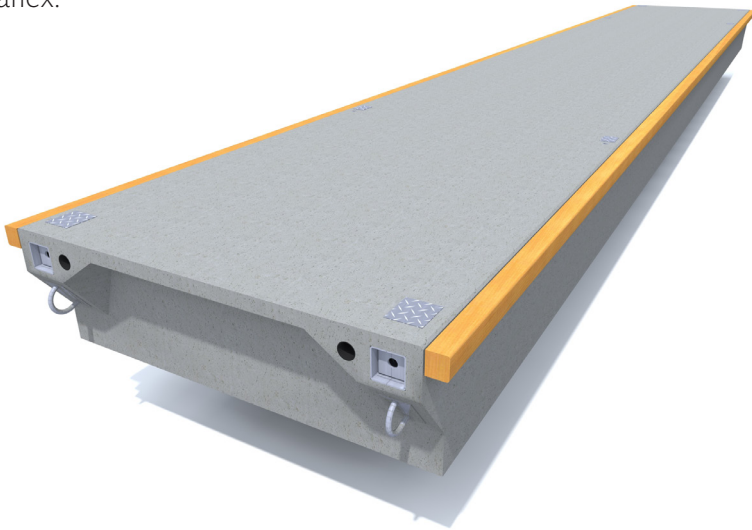


Breakwater pontoons 3300, 3800

The **Breakwater Pontoons 3300 and 3800** are popular and widely used floating solutions to protect marinas. The pontoons are extremely strong and designed to endure all sea conditions. Due to their massive and stable construction these pontoons are also used as landing stages and overpass bridges. The Marinetek Breakwaters without keels work best when the sea wave length is less than 18 m. The floats are connected by flexible rubber and steel joints. Mooring with chains or Seaflex.



FLOATS	M3316BR	M3320BR	M3816BR	M3820BR
Length (m)	16,05	19,90	16,05*	19,90*
Width with fenders (m)	3,3	3,3	3,8	3,8
Concrete width (m)	3,0	3,0	3,5	3,5
Height (m)	1,0	1,0	1,2	1,2
Weight (t)	20,9	26,0	31,5	39,2
Net capacity (kN/m ²)	5,5	5,5	6,1	6,1
Freeboard (m)	0,55	0,55	0,61	0,61
Strength of joint (kN)	2x703	2x703	2x812	2x812
Joint gap (mm)	90	90	90	90

*3800 -series pontoons have middle rubber in joints

Exact unit weight and freeboard are subjects to detailed specification of the unit, equipment and mooring methods.

Marinetek operates a policy of continuous development and reserves the right to change specifications without notice.

Modification date: 14.11.2014

MARINETEK GROUP

Vattuniemenkatu 3
FI-00210 Helsinki
www.marinetek.net

TEL. +358 (0)9 682 4100
FAX +358 (0)9 682 41030
EMAIL info@marinetek.net

TECHNICAL DATA

Concrete strength: 45 N/mm² steel reinforced plastic fibre concrete

Exposure class according to European EN 206-1 standard

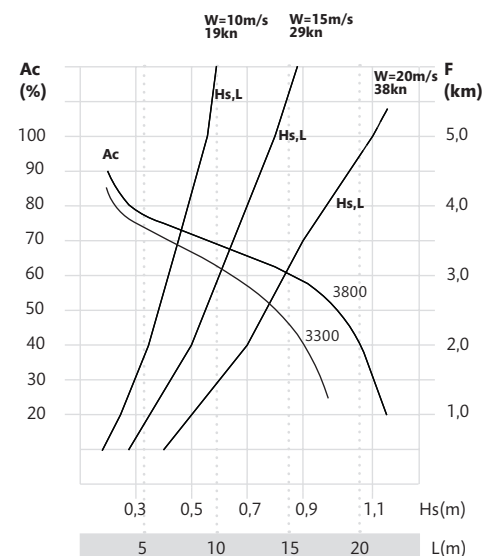
Core: Expanded polystyrene, density 15 kg/m³

Reinforcement: Partly or fully hot dip galvanised or stainless steel

Optional accessories: Wooden deck, fixing rails, cable ducts and fenders (timber or plastic)

WAVE ATTENUATION CAPACITY

Sheltered sea conditions



F=Effective fetch lenght W=Wind velocity
L=Wave length Hs=Significant wave height
Ac=Wave attenuation capacity



MARINETEK